



iBEAM[®] OnSite HD / OnSite Standard Def *Live Remote-Control Construction Camera*

This Quick Start Guide will show you how to

- View and control your camera from your computer
- Save photos from the live view
- View, download, print, and email photos from the online Image Archive

GETTING STARTED

- Java must be installed and enabled in your browser.

Download Java here: <http://java.com/en/>

How to enable Java: http://java.com/en/download/help/enable_browser.xml

- Cookies must be enabled in your browser.

Internet Explorer

1. Click the **Tools** button, and then click **Internet Options**.
2. Click **Sites**.
3. In the **Address of website** box, type the IP address of the camera, then click **Allow**.
4. Click **OK**.

Firefox

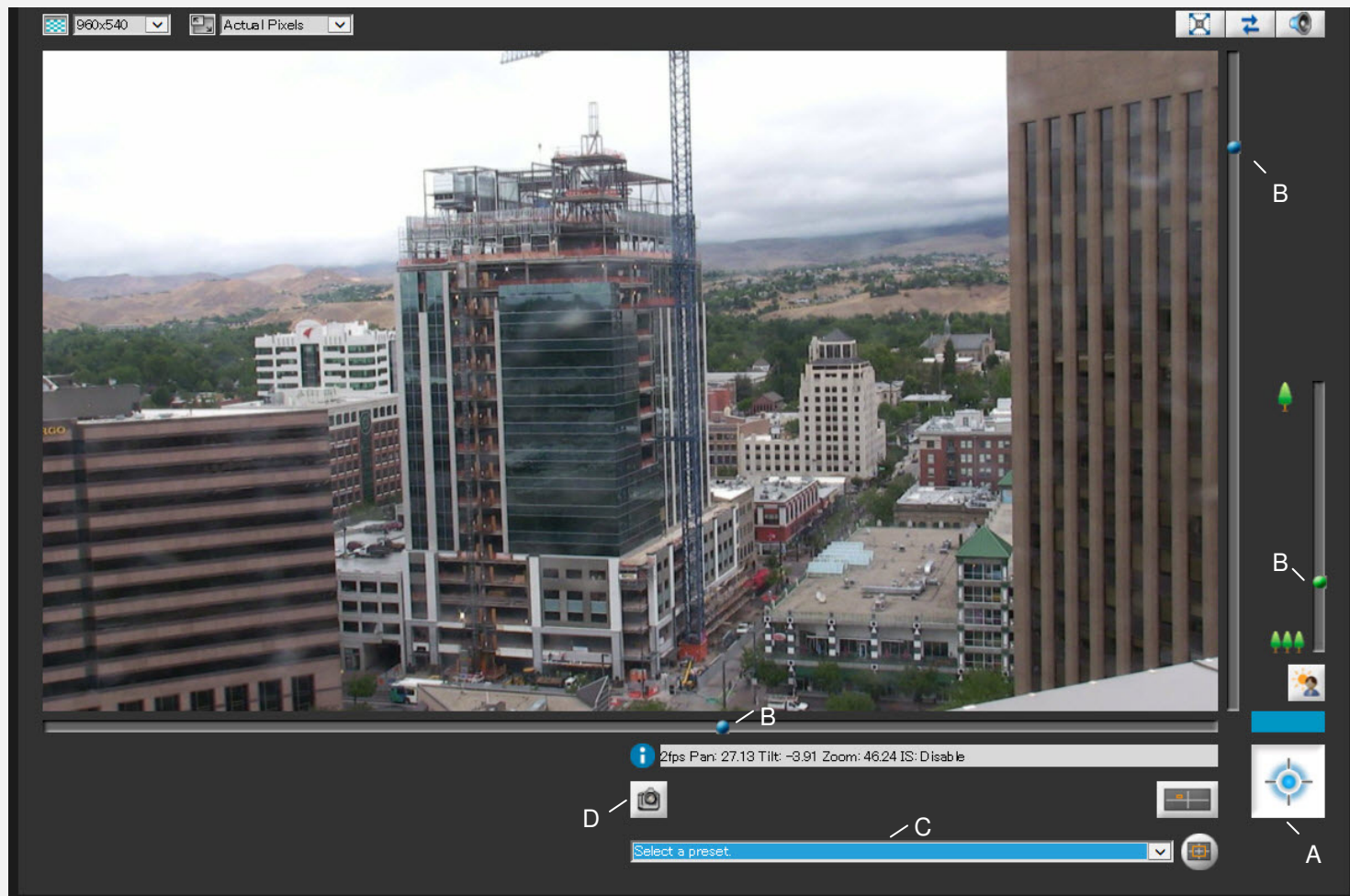
Cookies are enabled in Firefox by default.

- Email support@ibeamsystems.com for your camera's IP address.

Chrome

1. Click the Chrome menu on the browser toolbar, and then select **Settings**.
2. Click **Show advanced settings**.
3. In the "Privacy" section, click the **Content settings button**.
4. In the "Cookies" section, click **Add a new exception pattern** and enter the IP address of the camera, then click Allow.
5. Click **Done**.

USING THE CAMERA



Pan-Tilt-Zoom Control

- Select the Control button (A) to request camera control.
- Use the slider controls (B) to pan, tilt and zoom the camera.
- Use the drop-down menu (C) to move to a preset position.
- Click anywhere on the live video to center the camera at that position.

Save a Photo from the Live Feed

- Click the snapshot button (D) then right-click on the still image and save to your computer.

LOG IN

- Select the **Archive** button on your camera's web page or the **Client Login** button on iBEAM's home page (www.ibeamsystems.com)
- Enter your user name and password
- Check "Remember me on this device" to skip the log-in step in the future
- Click the "Log In" button

To remove your memorized log-in information,

User Log In

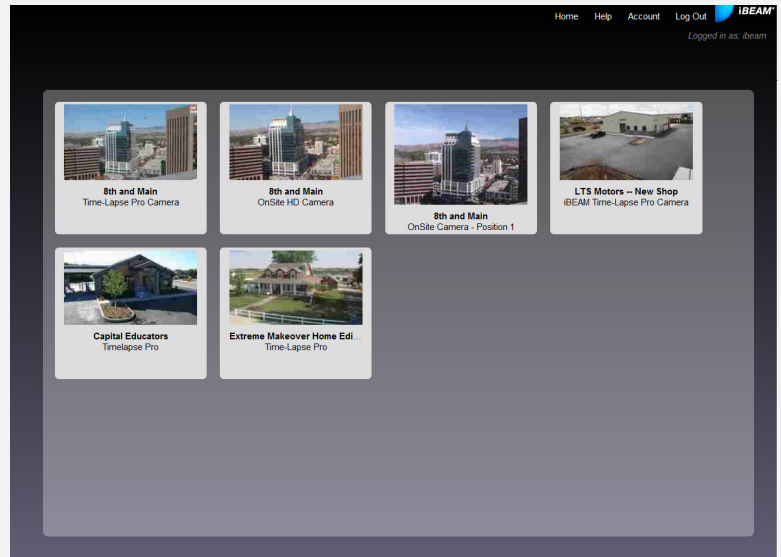
User:

Pass:

Remember me on this device?







CHOOSE A CAMERA

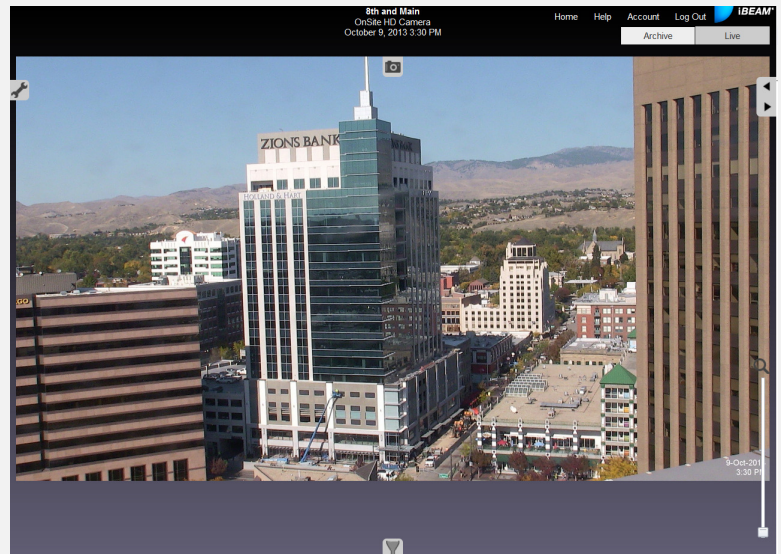
- Select a camera to view from the Home screen



VIEW SAVED IMAGES

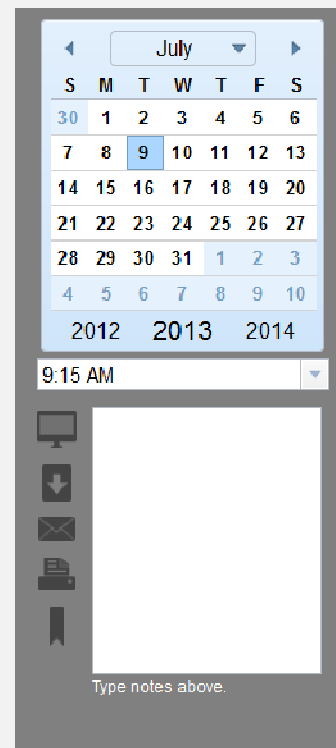
- The newest photo from this project is displayed
- Use the tools to find, view and work with photos
- Click icon to open or close menu

-  Calendar and Tools
-  Filter Images
-  Previous Image
-  Next Image
-  Zoom
-  Show All Cameras
- Show Live Camera



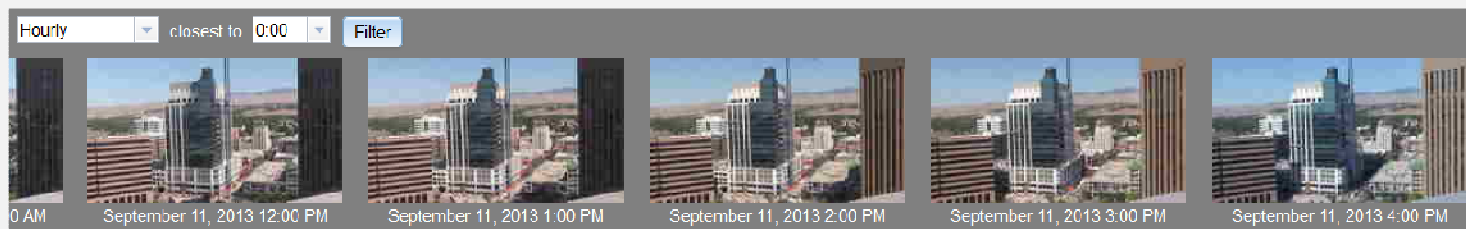
CALENDAR AND TOOLS

- Select photo date on the calendar
- Select photo time on the drop-down menu



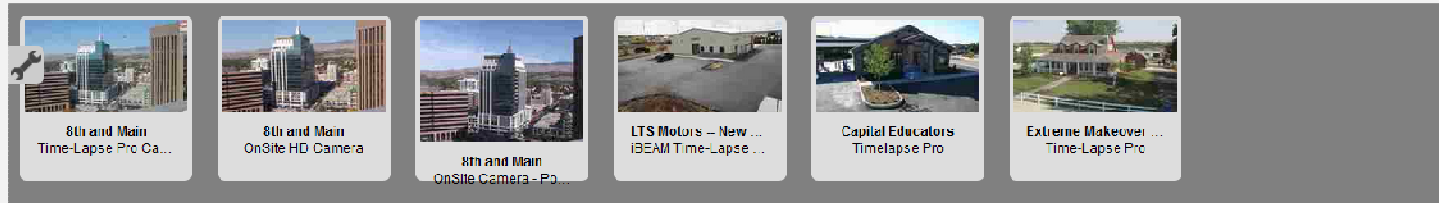
- View full-screen (not available in Internet Explorer)
- Download photo
- Email photo
- Print photo
- Bookmark photo
- Enter notes in the white note area

FILTER IMAGES



- Select filter type in the first drop-down menu: All, Hourly, Daily, Weekly, Monthly, Note/Bookmark
- Select filter variable(s) on secondary drop-down menus:
Example: Hourly closest to 0:00
- Select the "Filter" button to apply your filter parameters
- Use the slider arrows to view filtered photos
- Select a photo to view

SHOW ALL CAMERAS



- Select another camera to view

PREVIOUS/NEXT IMAGE

- Move to previous/next photo

ZOOM

- Zoom using the mouse scroll wheel or by dragging the zoom slider
Internet Explorer: click the zoom slider to activate
- Drag the zoomed photo to move

Live **SHOW LIVE CAMERA**

- View live video feed
- See your camera documentation for specific instructions